



NO.58 WATTLE  
HAWTHORN

NO. 58 WATTLE  
HAWTHORN



# Contents

6–7	Project Vision
8–15	Team
18–25	Landscaping
26–31	Architecture
32–49	Interior Design
52–63	Customisation
64–65	Sustainability



# Project Vision

No. 58 Wattle has been thoughtfully considered and designed. The decision to set just seven townhomes within beautifully landscaped gardens will allow residents to live in generously proportioned homes surrounded by luxuriant greenery. Simple, modern and sophisticated, each home is both highly contemporary and established in character.

A magnificent oak tree stands in welcome at the front of No. 58 Wattle, reinforcing a sense of timeless, enduring beauty. This is truly a home to savour in every season.

From the moment you step inside, you will see your lifestyle unfolding across a series of impeccably appointed spaces. Filled with natural light and materials, every finish, fixture and texture will be a delight to discover.

ACCLAIMED

TEAM





# Created by Underline

Underline is a design-focused property development company with a deep understanding that every person uses a space uniquely. This genuine approach brings an element of flexibility and customisation that creates highly considered spaces for life.

Every detail of an Underline project is refined and resolved to ensure the perfect balance between function, practicality and form.

Underline’s deep appreciation for people, spatial dynamics and design guarantees the delivery of timeless places in which to live and thrive.



Cantala, Caulfield North



George & Powlett, East Melbourne



*Georgina Goldsworthy*

Georgina Goldsworthy, Director

Georgina brings almost 20 years of experience to her role as director of Underline. She is always closely engaged with the design team, sharing her deep understanding of how little details can make a substantial difference to people’s lives.



# Architecture & Interiors by Ewert Leaf

Ewert Leaf is a dynamic, multi-disciplinary design practice distinguished by its innovative approach to architecture and interior design. This highly acclaimed team is passionate about shaping the future of the industry and is known for creating spaces that are both contemporary and enduring. The studio consistently delivers award-winning projects across the private and multi-residential, hospitality, retail and commercial sectors.

Pelham, Armadale



Central Park, Malvern East



Simone MacGinley, *Director, Interior Design*

A stylized, handwritten signature of Simone MacGinley in black ink.



Will Leaf, *Managing Director*

A stylized, handwritten signature of Will Leaf in black ink.

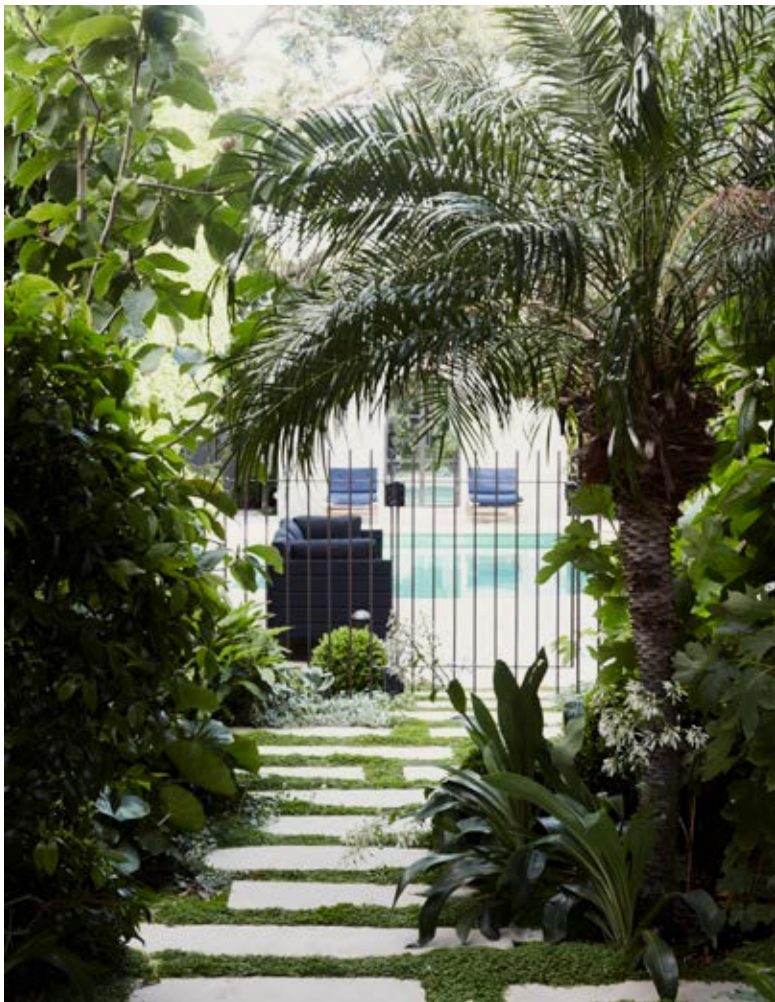
A dynamic environment of collaboration and innovation ensures Ewert Leaf produces beautiful, memorable work. In-house architects and interior designers work together to create a cohesive design language that connects the interior design with the architectural form. The result is a journey of beautiful moments to be enjoyed throughout No. 58 Wattle.



# Landscaping by Myles Baldwin Design

Myles Baldwin is a highly sought-after landscape designer known for his work on ‘Boomerang’ in Elizabeth Bay and the ‘Lake House’ in Tasmania. His company values the opportunities that each piece of land offers, and he works to craft landscapes that are compatible with the architectural design and sustainability requirements.

Inspired by the traditional gardens and nearby parklands of Hawthorn, Myles Baldwin Design has created a layered landscape for No. 58 Wattle, from ground cover and shrubbery to the stately oak tree.



Bellevue Hill, Sydney



George & Powlett, East Melbourne



Myles Baldwin, *Director*



REFINED

DESIGN







# Landscaping

Inspired by the grand oak tree at the entrance, Myles Baldwin's design is based on the romantic idea of a slow garden walk through an ever-changing landscape.

The recessed gate, surrounded by greenery, immediately invokes gardens of another era that were enjoyed at a slower pace. Integrated deciduous, evergreen and flowering climbers on the fences will create delightful vistas from every level.

The curved pathway that meanders through No. 58 Wattle is striking and generous, allowing two people to walk side by side into their home. The entries to each residence also feature a unique variation in landscape design, creating a series of individual arrival points.

The design of the garden in the deep and private courtyards brings a variety of tonality, texture and forms. These versatile outdoor spaces are lush, low maintenance and ready to enjoy and adapt to suit your lifestyle.



Artist Impression of Exterior

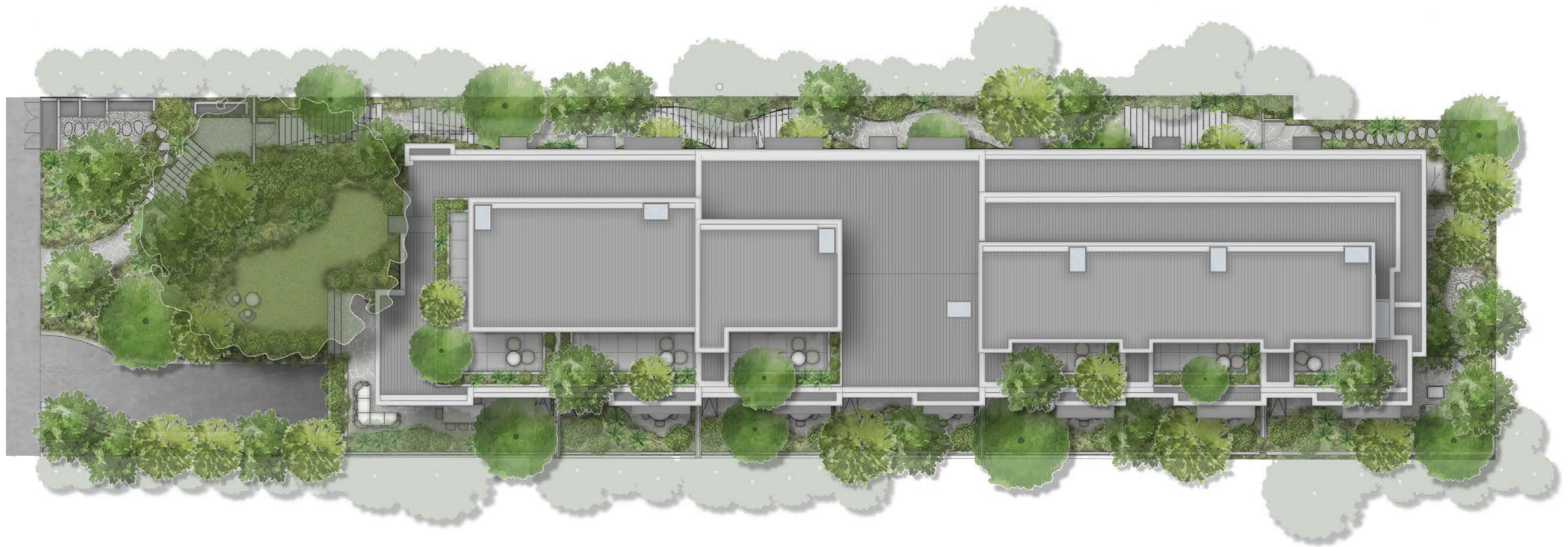






“I have focused on contrasting forms, big and small leaves, smooth and serrated edges. There will be seasonal delights as the garden fades through autumn and searches for sunlight in winter.”

Myles Baldwin, *Director*





# Architecture

No. 58 Wattle is an elegant statement of contemporary design, with a striking yet timeless character. The main facade with large format picture frame windows ensures the established oak tree is celebrated through the seasons.

A velvety concrete render on the facade creates a simple palette that is complemented by the layered garden. Picture frame metal window shrouds with elegant reeded glass provide sophisticated accents and sit beautifully within the refined natural palette.

Hawthorn is an established suburb of streets lined with traditional cottage gardens and grand Edwardian homes. At No. 58 Wattle, Ewert Leaf has crafted a series of homes that are modern yet sympathetic to the heritage of the suburb.







Artist Impression of Exterior

The magnificent oak tree positioned at the front of No. 58 Wattle provides an anchor point for the address and frames the architectural design. Strong architectural lines are softened by the organic curves of the garden, creating a sense of calm. Awash with dappled light, these elevated homes look out over the green treetops of Hawthorn, strengthening the connection to the surrounding context.

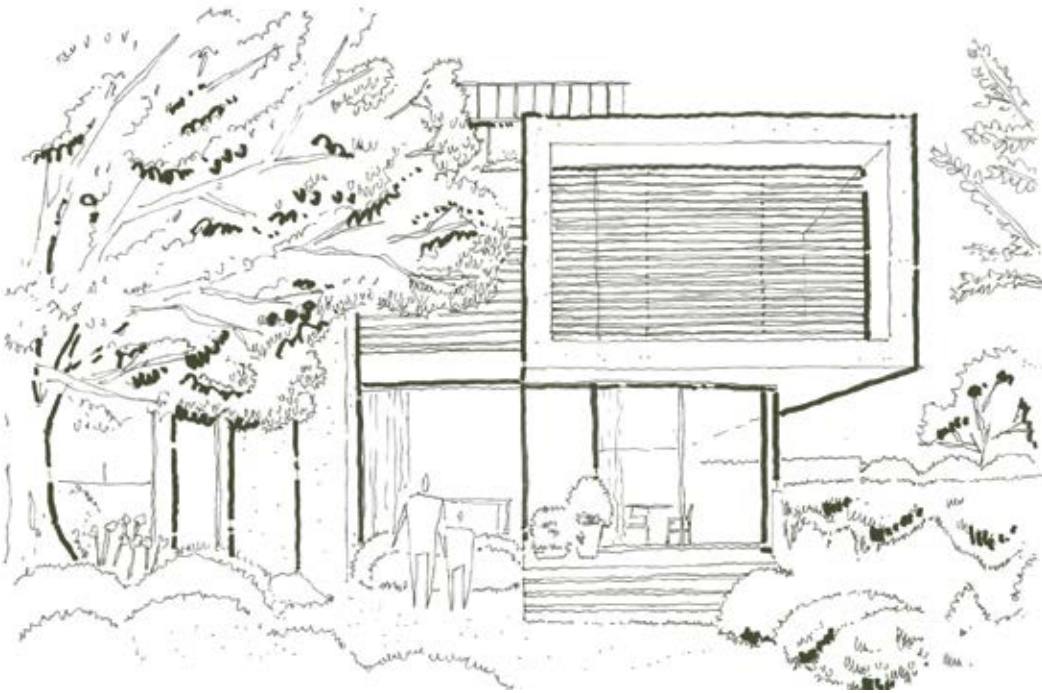
Finely crafted timber entry doors welcome you home, evoking a subtle reference to the surrounding gardens. This enduring connection between landscape and architecture, between the natural and the man-made, characterises these elegant homes.

A curved driveway with cascading greenery leads to your private and secure double garage, with lift access directly into any level of your home.



“Enduring materials and slipping planes are central to our site-responsive design at No. 58 Wattle. We have sought to create a sanctuary for owner-occupiers to enjoy a lifestyle where internal space permeates to the exterior, and the quality of the architecture is expressed through seamless transition and tactile finishes.”

Will Leaf, *Managing Director*



Artist Impression of Entry



## Interior Design



Artist Impression of Bathroom Vanity

The interiors at No. 58 Wattle capture the very essence of timeless luxury.

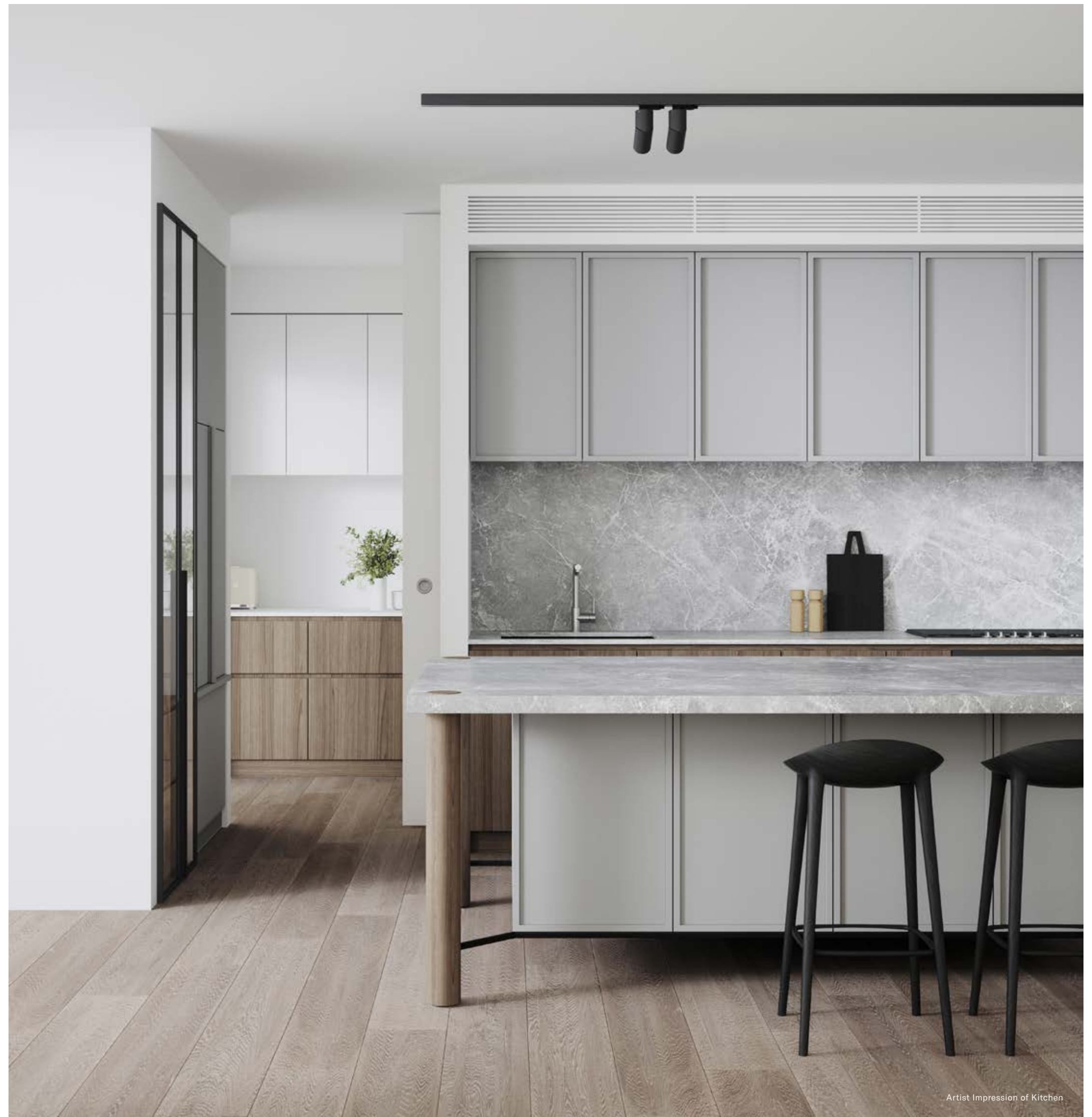
Heritage inspiration weaves through No. 58 Wattle; at the entry, a defined threshold of natural stone and timber tones pay homage to Hawthorn's traditional homes. Further nods to the past are evident in the detailed joinery throughout the home. The generous proportions add to the impression of stepping inside a grand residence of yesteryear.

Full-height windows and soaring ceilings allow natural light to pour in from both sides of the home, emphasising the feeling of spaciousness. Natural materials featuring timber, stone and metalwork reflect the rich architectural fabric of Hawthorn and provide a harmonious continuity of textures.



## Kitchen

The generous kitchen is focused around a monumental island bench. This striking freestanding piece features rounded, hardwood timber legs, an expansive natural stone top and double-sided storage. A separate pantry, illuminated by fluted glass windows, provides abundant storage for appliances and preparation areas. The contemporary design with a nod to tradition creates a generous and highly functional space to come together with family and friends.



Artist Impression of Kitchen





Artist Impression of Living Area

## Living Space

The magnificent joinery in the kitchen flows into the main living space, where a focus on natural materials creates a sense of richness and textural depth. Broad engineered oak flooring in mid tones provides a warm autumnal glow and anchors the refined, neutral interior palette.

The full-width living zone and soaring ceilings add to a sense of grandeur. This expansive space offers the living and dining views to the private garden. Full-height windows connect these zones to the verdant landscaped surrounds, creating a natural extension of the home.

“No. 58 Wattle has an understated elegance that honours a concept of place and time. The contemporary built form feels enduring — paying homage to the history of the site and the established surrounding landscape. Each home has a sense of generosity in scale, quality of finish and lifestyle.”

Simone MacGinley, *Director, Interior Design*







## Bedrooms

With bedrooms split across the top two floors, each home features its own unique layout. Enjoy picture frame windows opening onto the oak tree canopy, or generous secondary bedrooms located on level one, where an abundance of natural light spills through the large, full-height reeded glass windows into these tranquil sanctuaries.

In select homes, a private staircase opens up to an expansive whole floor master suite with treetop views beyond the landscaped balcony. Extensive master robes are generously appointed, with a combination of single and double hanging, shelving and drawers, concealed behind beautiful timber-tone joinery doors. Integrated lighting adds a touch of luxury and refinement.



Artist Impression of Bedroom





Artist Impression of Bath

## Bathrooms

Main bathrooms and ensuites have been designed as opulent retreats where the bespoke joinery, large format tiles and natural stone vanity have a warm and tactile nature. The master ensuite features double vanities and a shower, beautifully illuminated with clear skylight panels above allowing sunlight to stream into these atmospheric spaces. Luxurious powder rooms at the entry of each home are well-appointed for any guest.





Artist Impression of Office



## Home Offices

The separate home offices are highly considered and functional spaces that allow you to work from home in absolute comfort. Stylish joinery captured in a timber tone finish with touches of natural stone echo the living space materials whilst scalloped acoustic panels add a warm and tactile quality.

The size and location of these spaces varies in each home, but they are always orientated to enjoy natural light. Some are designed for one, while others are large enough for two or could double as a second living room or fourth bedroom. The choice is yours.



Artist Impression of Office





Artist Impression of Garage

## Garage

Each home features a private lock up double garage with direct stair and lift access into the home.



DIVERSE

CUSTOMISATION





# Customisation

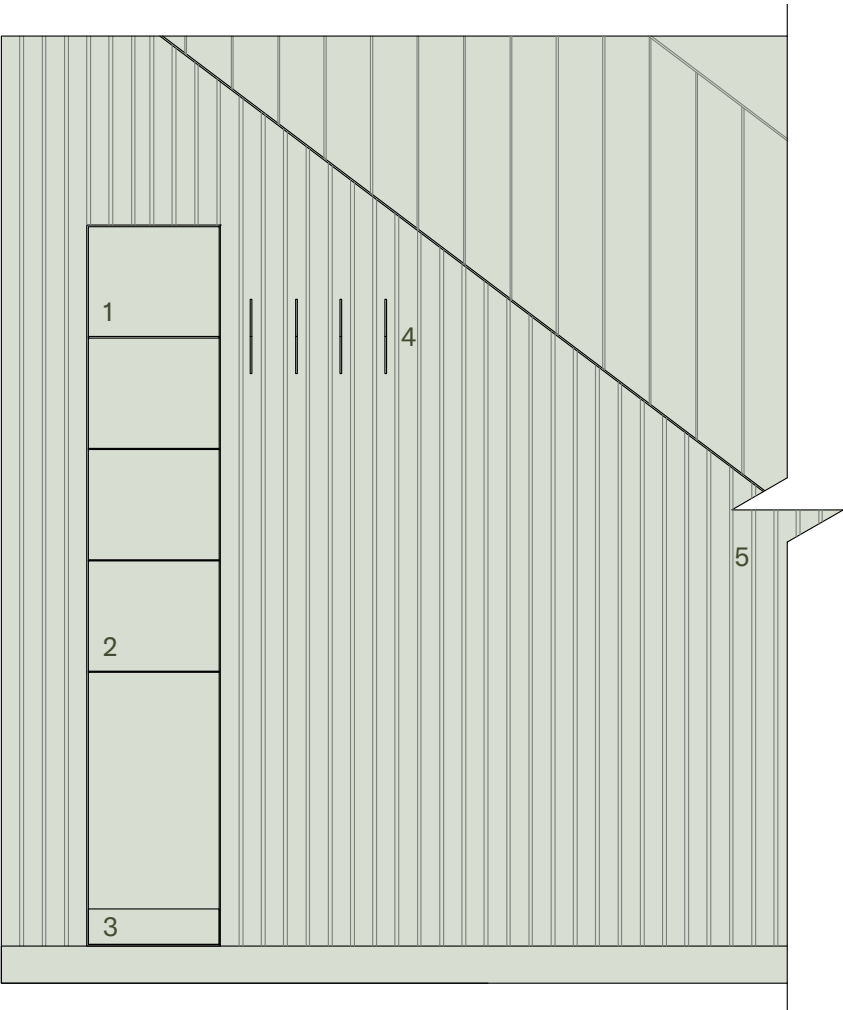
Underline appreciates that each and every person chooses to live differently and finds joy in diverse aesthetics. To that end, the homes at No. 58 Wattle provide an elegant canvas upon which to layer a range of meaningful options. A choice of bespoke joinery pieces and additional features will allow you to customise your home to make it uniquely yours.



## Entry Nook

A contemporary take on the entry hall of yesteryear, the entry nook cleverly recessed in the feature wall panelling, is the perfect place to drop your keys and charge your phone. While the elegant wall hooks readily await your hat and coat upon arriving home.

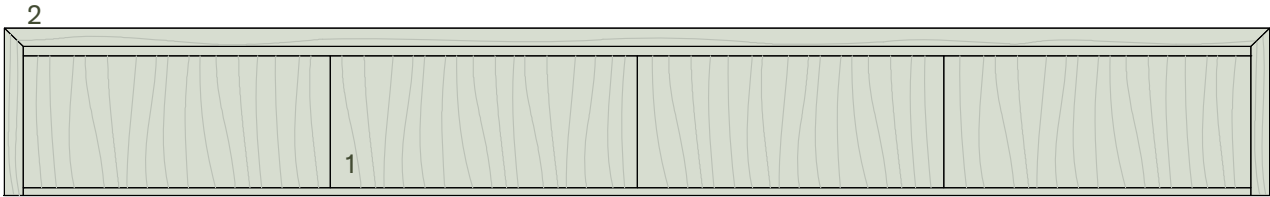
- 1. Recessed shelves
- 2. GPO and USB points
- 3. Upstand for umbrellas
- 4. Wall hooks
- 5. Curved batten wall



## Dining Bench

Your new favourite spot to read a book or enjoy a meal while looking out over the garden. With four large drawers underneath, this magnificent piece creates space in the dining and living area and offers even more storage for the home.

- 1. Drawers for extra storage
- 2. Bench seat

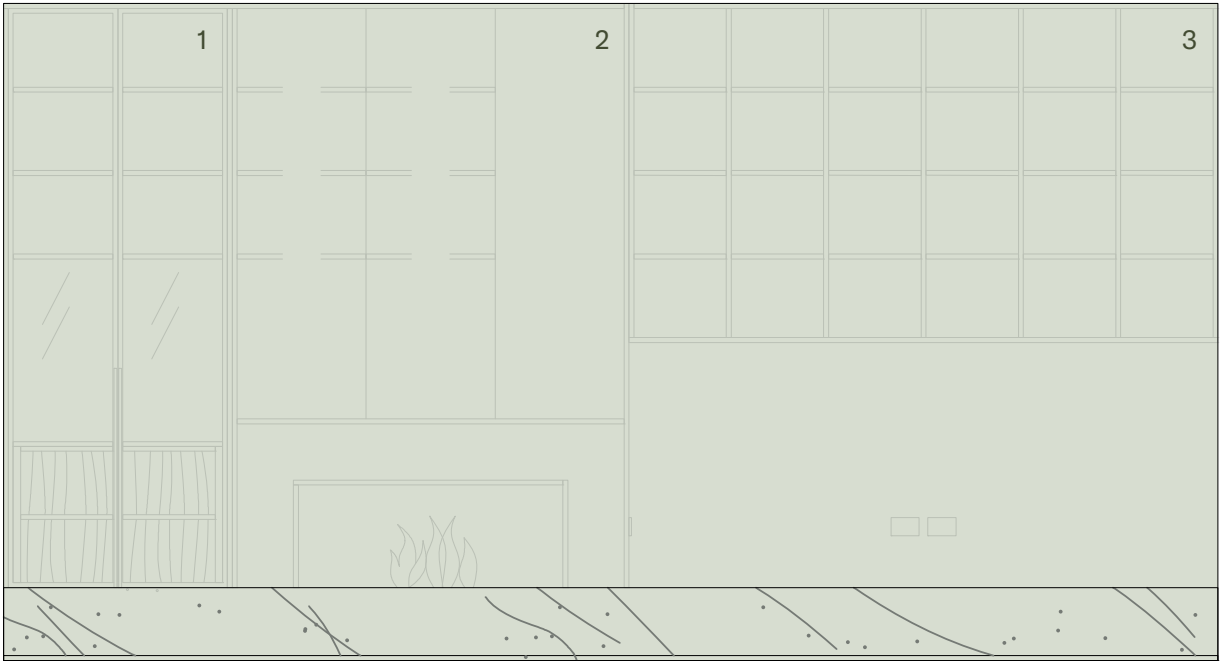




Living Plinth

With an expansive stone plinth set against a plastered wall providing a strong base, this space can be tailored to suit your lifestyle. Leave it open, or select from three bespoke pieces, designed to rest on the plinth as either stand alone pieces or to perfectly complement each other as a full set.

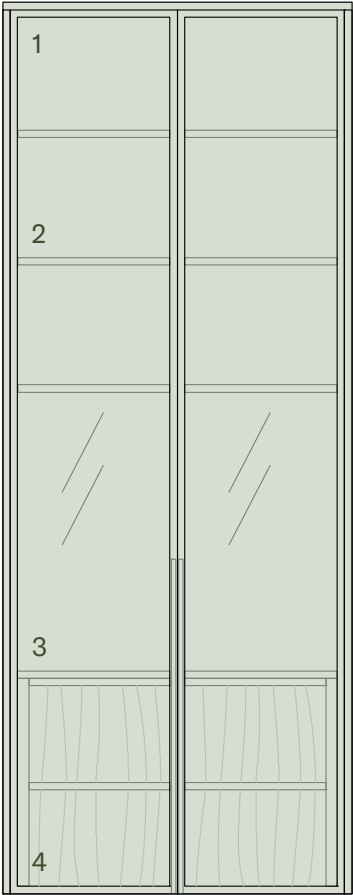
- 1. Display cabinet
- 2. Gas fireplace
- 3. Library bookcase



Display Cabinet

A freestanding display cabinet or bar features black framed glass doors, timber tones internally and lighting to showcase your finest pieces.

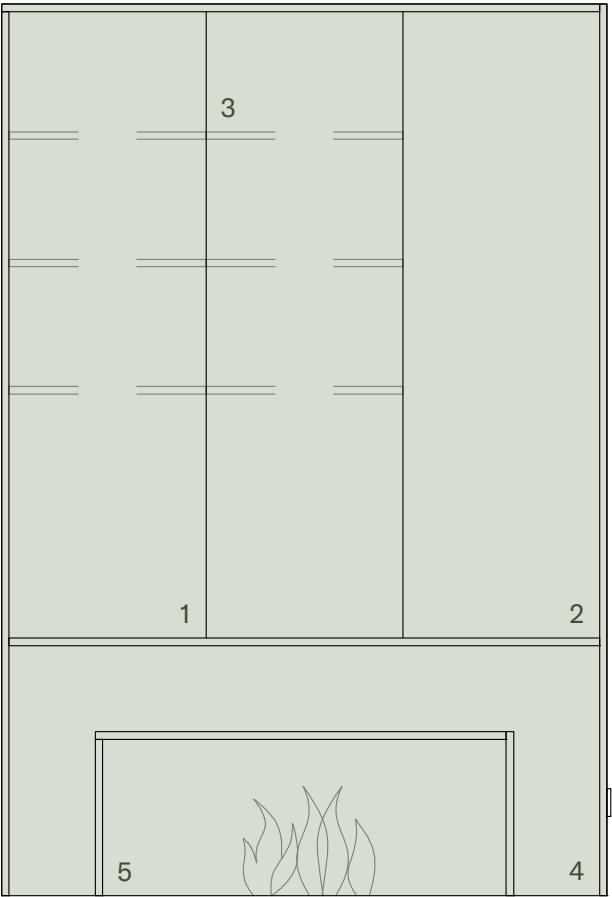
- 1. Metal framed glass doors
- 2. Shelves
- 3. Natural stone benchtop
- 4. Drawers



Gas Fireplace

A stunning gas fireplace, designed in black steel with feature detailing and secret storage, is the perfect centrepiece of the room and a lovely setting for a cosy night in.

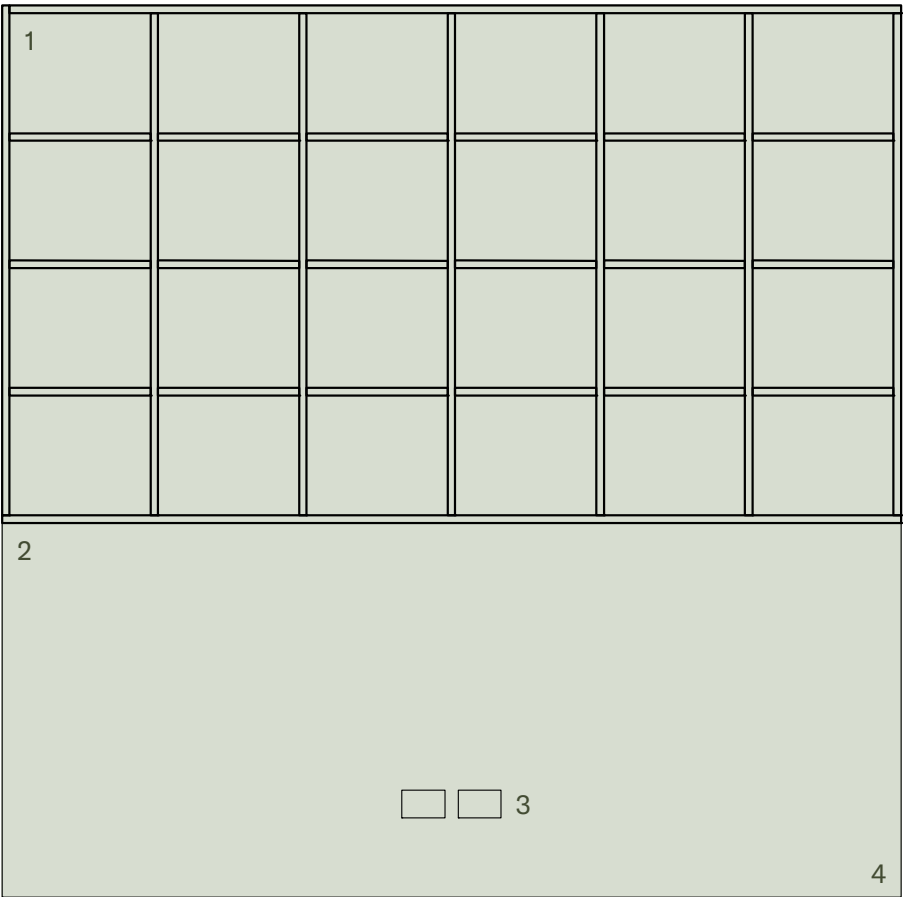
- 1. Powder coated metal doors
- 2. Fixed powder coated metal panel
- 3. Concealed storage
- 4. Powder coated metal fascia
- 5. Gas fireplace



Library Bookcase

For those who love books and displaying special treasures, there is a timber tone bookcase. Set against a black background, this charming piece allows you to showcase your books while minimising the visual impact of the television.

- 1. Library shelving
- 2. Matte black backing
- 3. AV/TV and GPO
- 4. Open to stone plinth





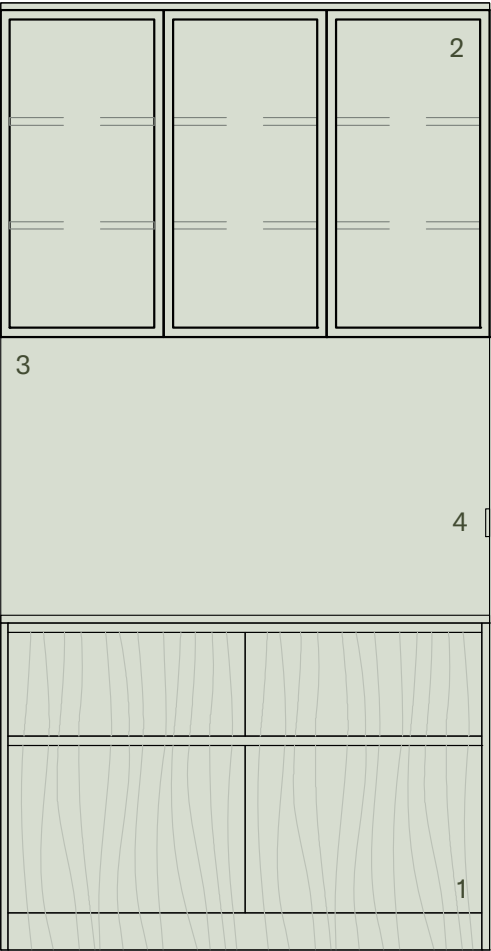
Pantry

Enjoy a spacious pantry — a luxury in any kitchen — with options for more, such as a wine fridge, combi oven or hydrotap with hot, cold and sparkling water.

- 1. Drawers
- 2. Overhead cupboard
- 3. Stone splashback
- 4. Double GPO
- 5. Microwave recess with GPO
- 6. Wine fridge
- 7. Combi oven
- 8. Hydrotap and font kit in bench
- 9. Cupboard
- 10. Hydrotap box

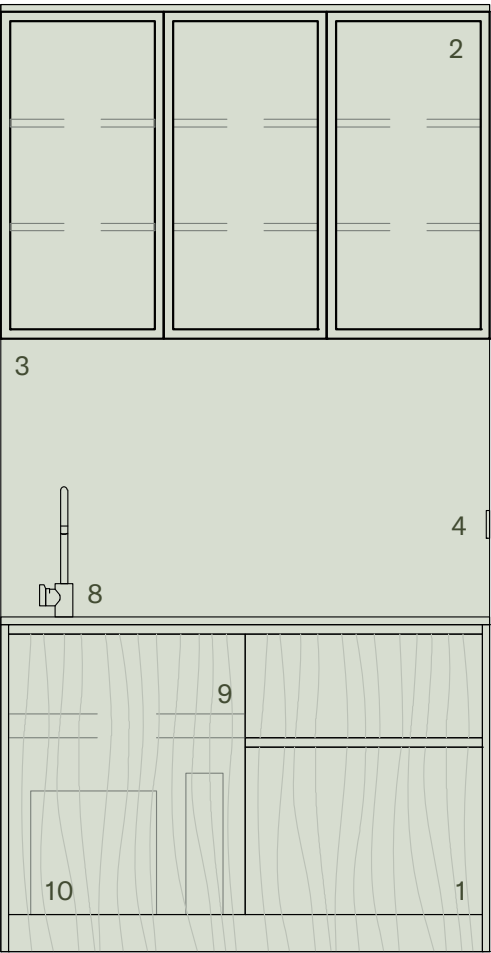


Standard – South



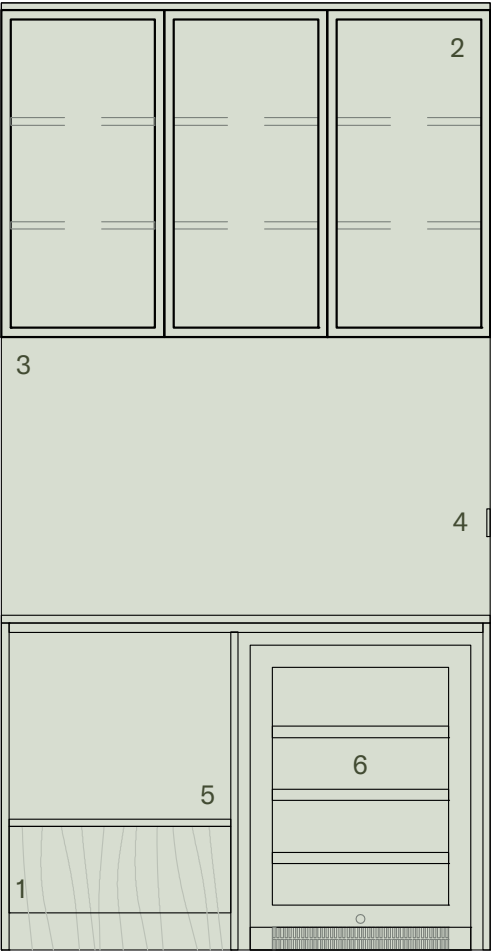
Standard – North

Hydrotap



North

Wine Fridge



South

Combi Oven



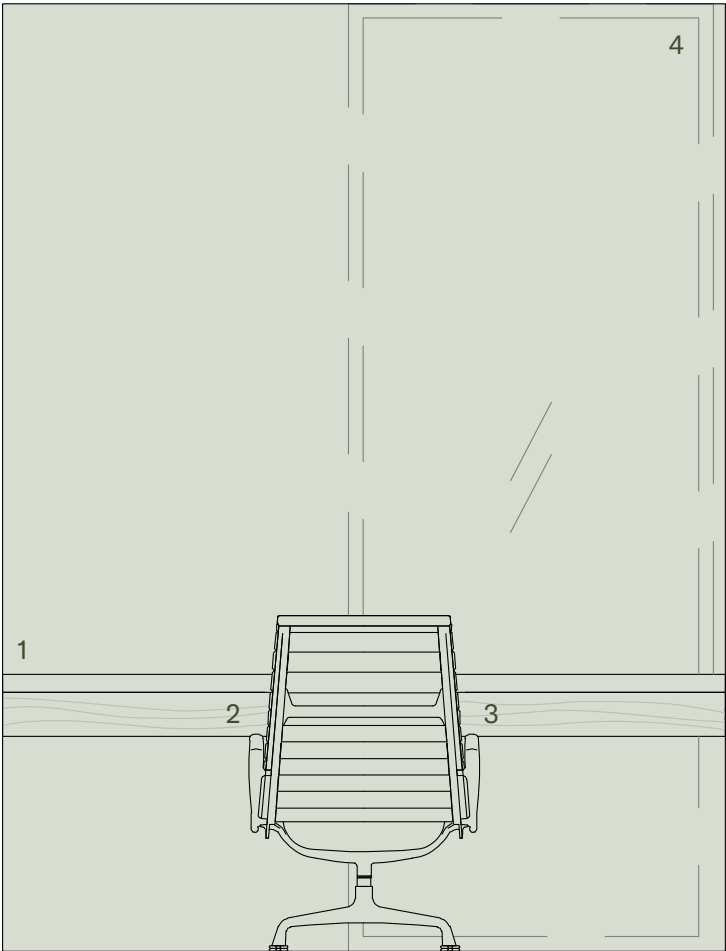
South



Home Office

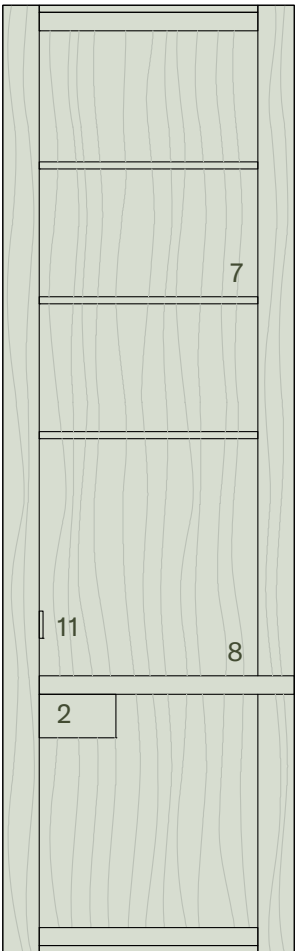
With working from home a norm in today’s climate, a proper office is required. Each home office includes a desk with concealed cable management as standard. From here, add the shelving and storage components you require.

- 1. Desk
- 2. Recessed cable tray with lid access
- 3. Double GPO and USB outlets
- 4. Window
- 5. Pinboard
- 6. Shelf
- 7. Bookcase shelves
- 8. Bench
- 9. Drawers
- 10. Cupboards
- 11. Double GPO

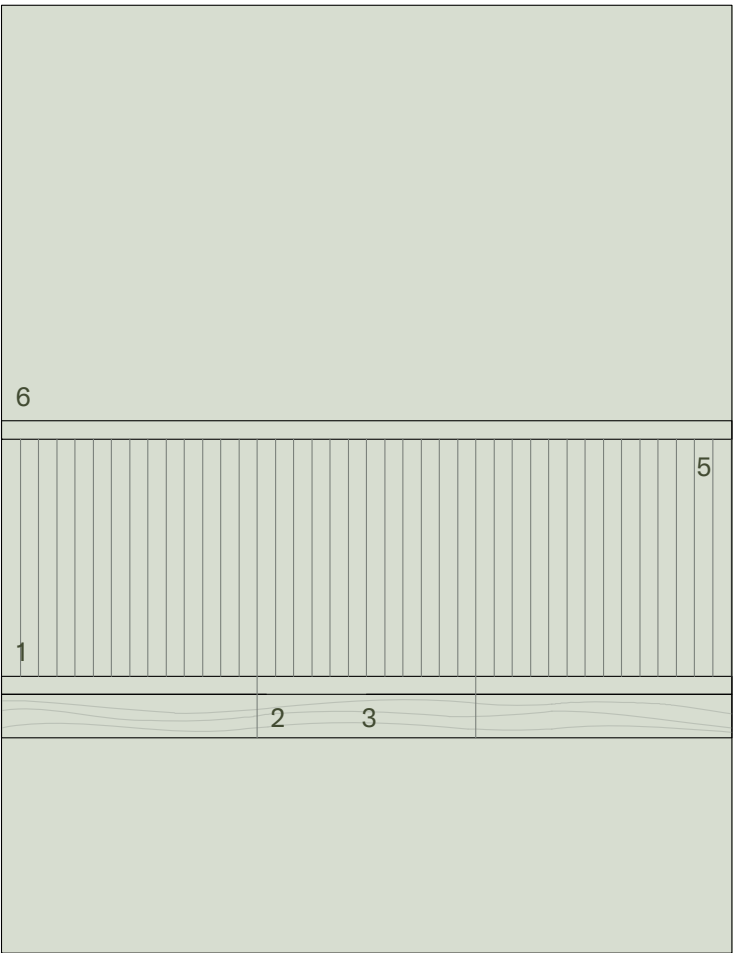


Desk with Window

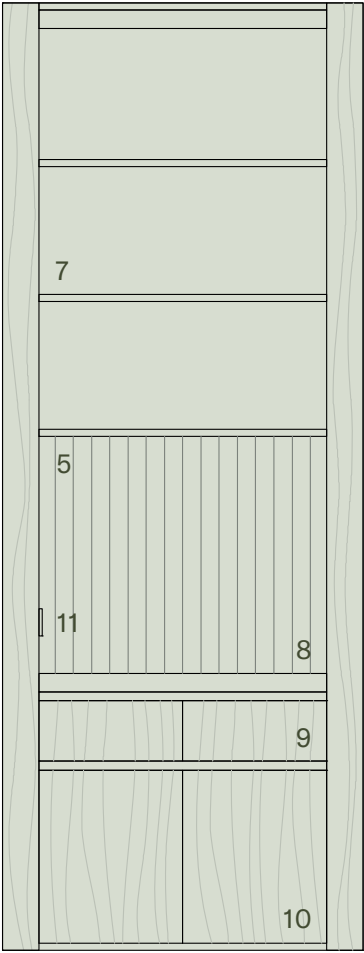
Bookend Shelving



Desk



Credenza



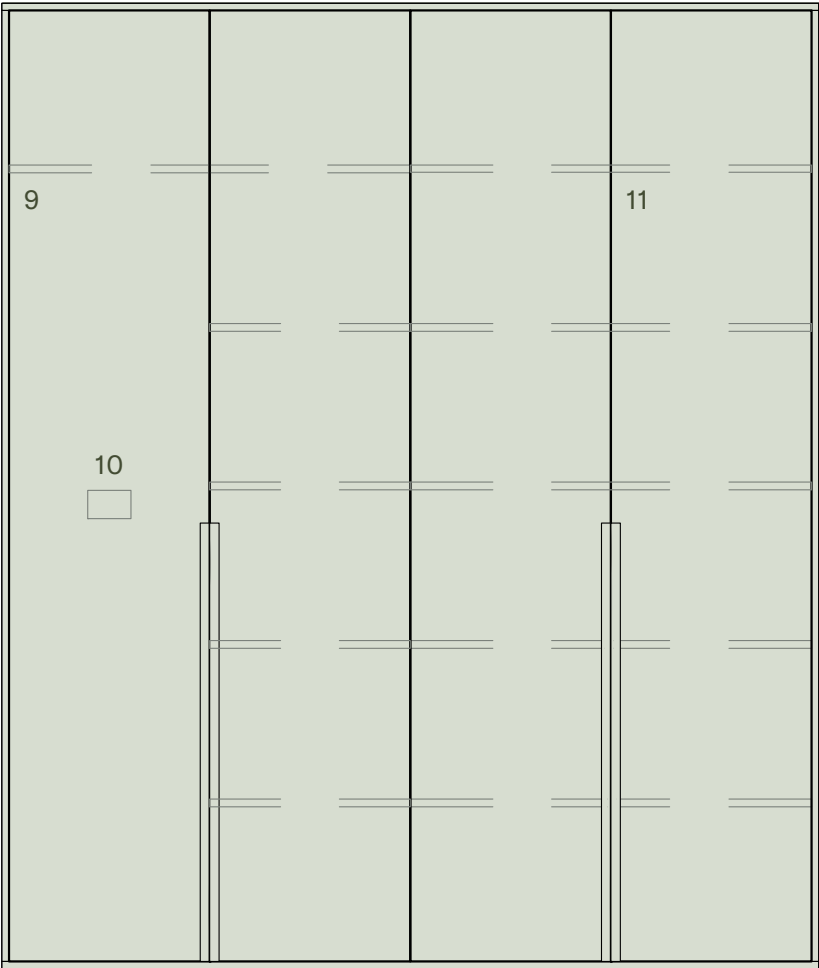


Linen & Laundry

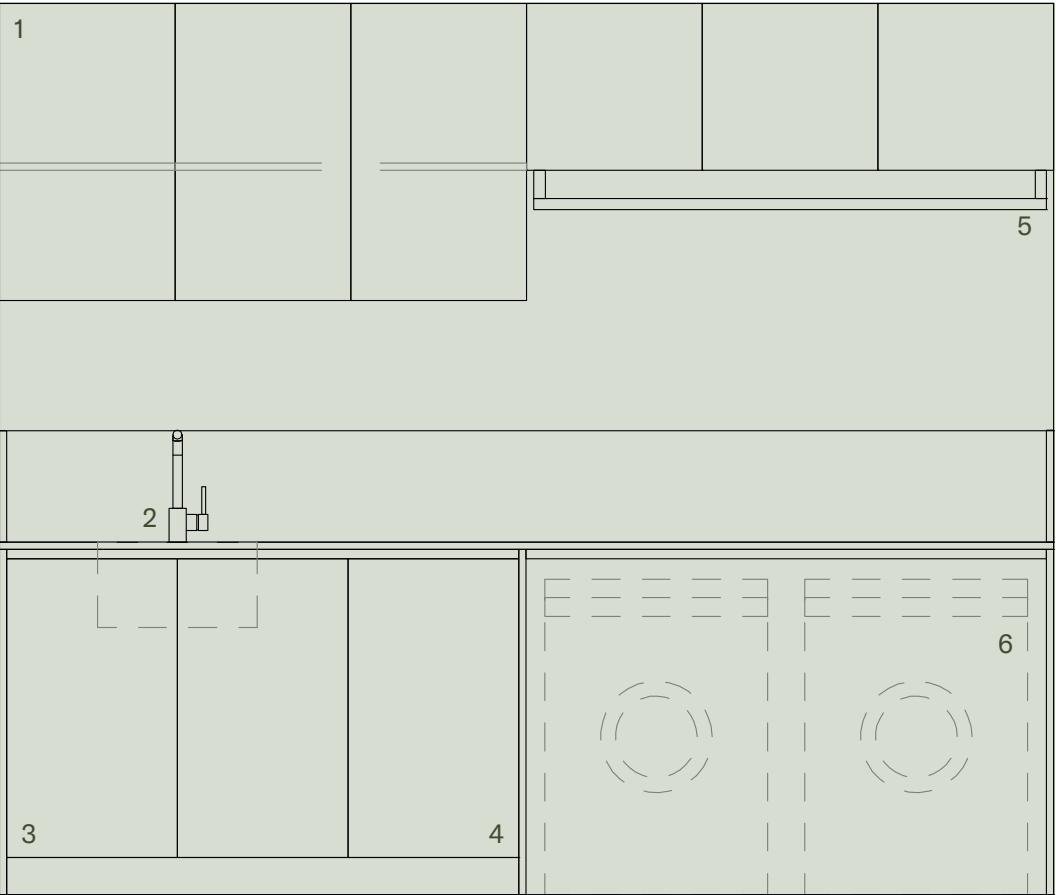
With a designated laundry, linen and broom cupboard, these homes are complete. The sizes vary in each, but they all come with a practical above bench hanging rail, or the ability to add a proper drying cabinet.

- 1. Overhead cupboards
- 2. Trough and splashback
- 3. Under bench cupboard
- 4. Clothes drawer
- 5. Hanging rail
- 6. WM and dryer side by side
- 7. WM and dryer stacked
- 8. Drying cabinet
- 9. Broom cupboard
- 10. GPO for charging a vacuum
- 11. Linen shelving

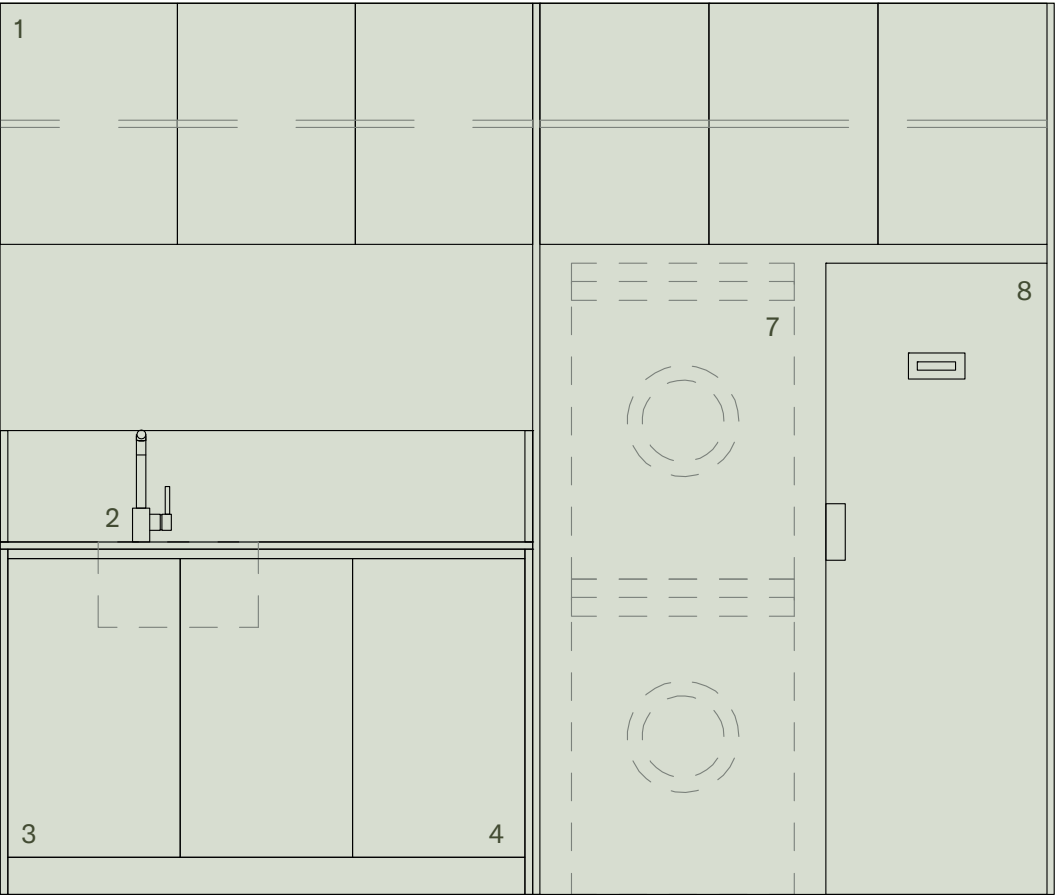
Linen



Laundry



Drying Cabinet

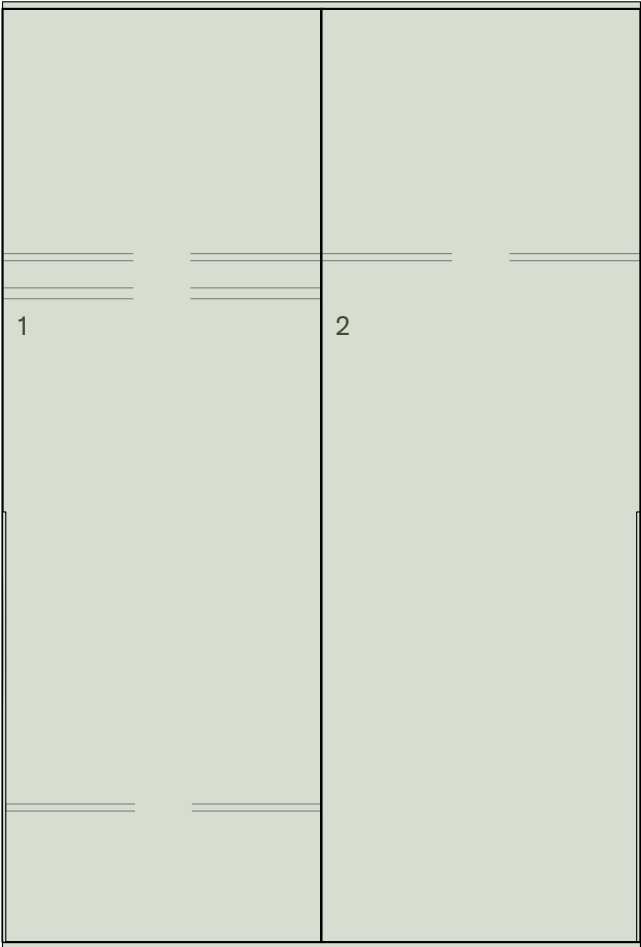




Garage

Set up the garage with the storage you need. From a mud cupboard with hanging rail and shoe shelf, to an open cupboard for all those bulky sports items or possibly a wine cellar. There is even a work bench for those who are handy. All easily accessed behind sliding doors.

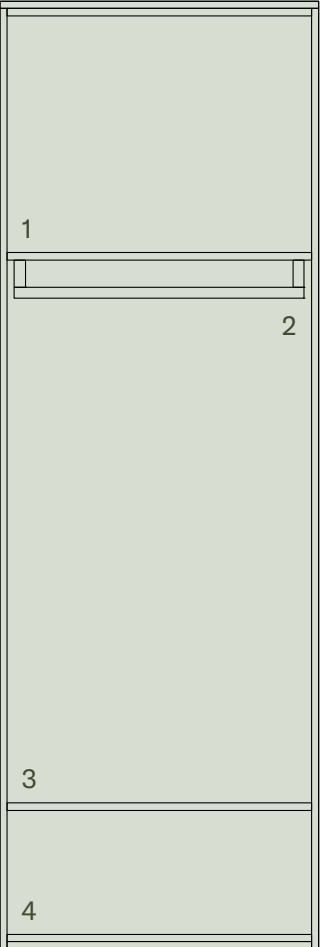
- 1. Mud cupboard
- 2. Open storage
- 3. Work bench



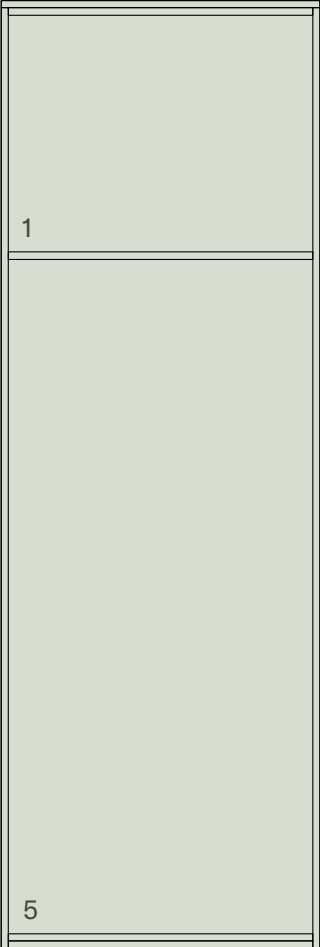
2 Sliding Doors

Mud Cupboard

- 1. Top shelf
- 2. Hanging rail
- 3. Shoe/bag shelf
- 4. Shoe storage
- 5. Open

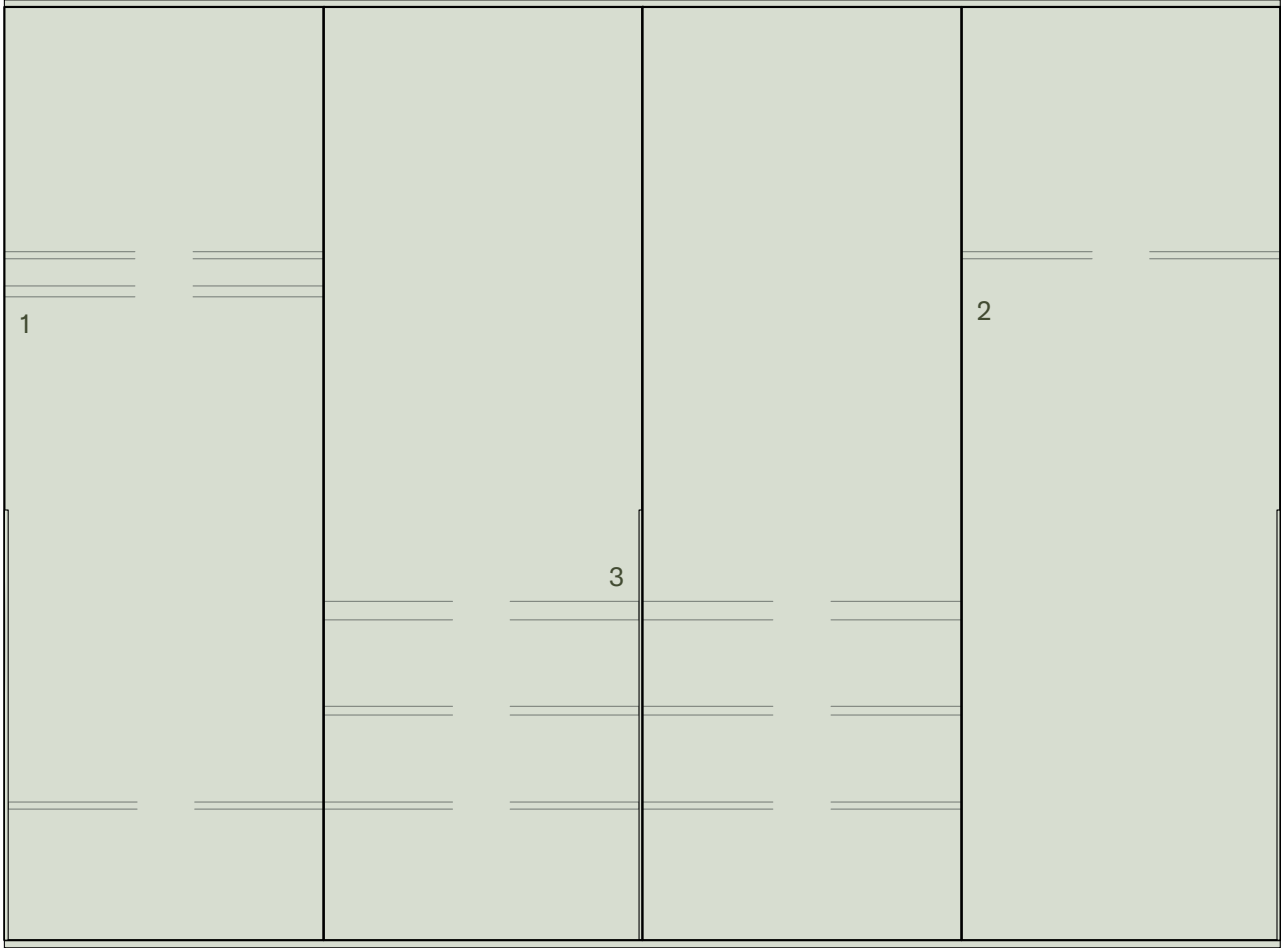


Mud



Open

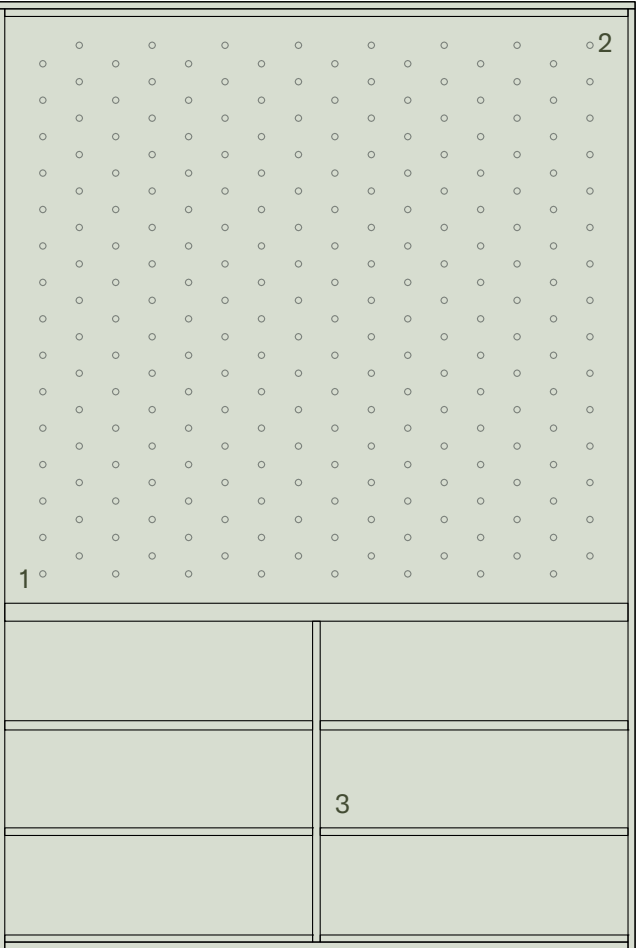
Garage



4 Sliding Doors

Workbench

- 1. Work bench
- 2. Peg board for tools etc.
- 3. Under bench shelves





# Sustainability

No. 58 Wattle has been designed to embrace the latest and proven ideas in sustainable design.



Passive Solar Design	Dual aspect with typically an east and west orientation and thermal insulation, these homes will retain heat in winter and stay cool in summer.
Double Glazing	A brilliantly sustainable addition for thermal control, this feature is benefited by subsequent acoustic protection.
Ceiling Fans	Fans are a sustainable and cost-effective option for generating a relaxing, internal breeze and available as an option to bedrooms.
Rainwater Harvesting	This hydraulic design captures rainwater from the rooftops and redirects it to a storage tank, ensuring future water for the gardens at No. 58 Wattle.
Sun Shrouds	Aesthetically pleasing, these beautiful veils add an extra layer of climate control on hot summer days.
Electric Charging Station	Every garage is future ready with provisions for electric charging included to adapt to the growing move towards greener transport.
Cross Flow Ventilation	Intelligent window design is the most natural and cost-effective way to ensure your home remains cool. Simply open the windows at opposite ends and let the breezes flow throughout your residence.
Solar Panels	An optional PV system can be placed on your roof to reduce your footprint and your electricity bill. There is also the ability to add a battery.
Bike Parking	Bike hooks are located in every garage.
Energy Efficient Appliances	Efficient dishwasher machines feature a 5 star WELS rating.



no58wattle.com.au  
No. 58 Wattle Road, Hawthorn

Underline  
E W E R T L E A F  
Myles Baldwin Design

Creative by Earl.St

Disclaimer: While all reasonable care has been taken in the preparation of this brochure and the particulars contained herein, it is intended to be a visual aid and does not necessarily depict the finished state of the property or object shown. No liability whatsoever is accepted for any direct or indirect loss or consequential loss or damage arising in any way out of any reliance upon this brochure. Purchasers must rely upon their own enquiries and inspections. Furniture is not included with the property. Dimensions and specifications are subject to change without notice. Illustrations and photographs are for presentation purposes and are to be regarded as indicative only. This brochure does not form part of, and is not, an offer or a contract of sale.



