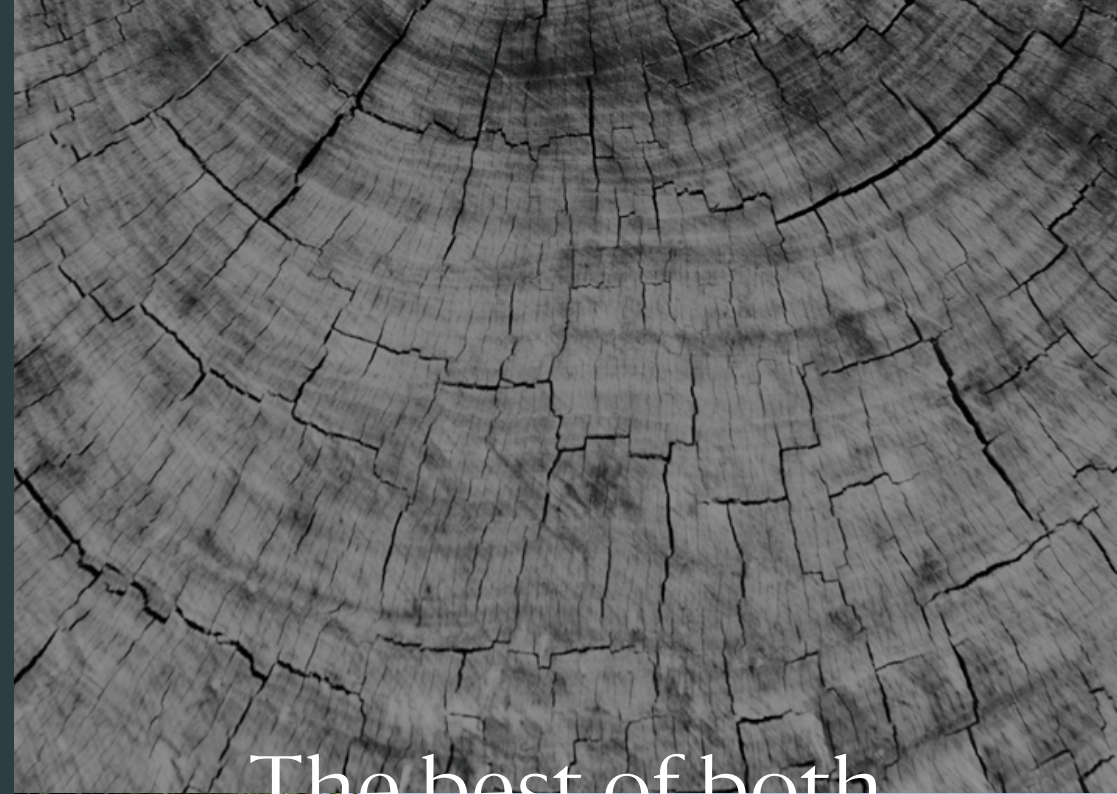


Canopy  
ELTHAM



The best of both





## A new way to live in Eltham



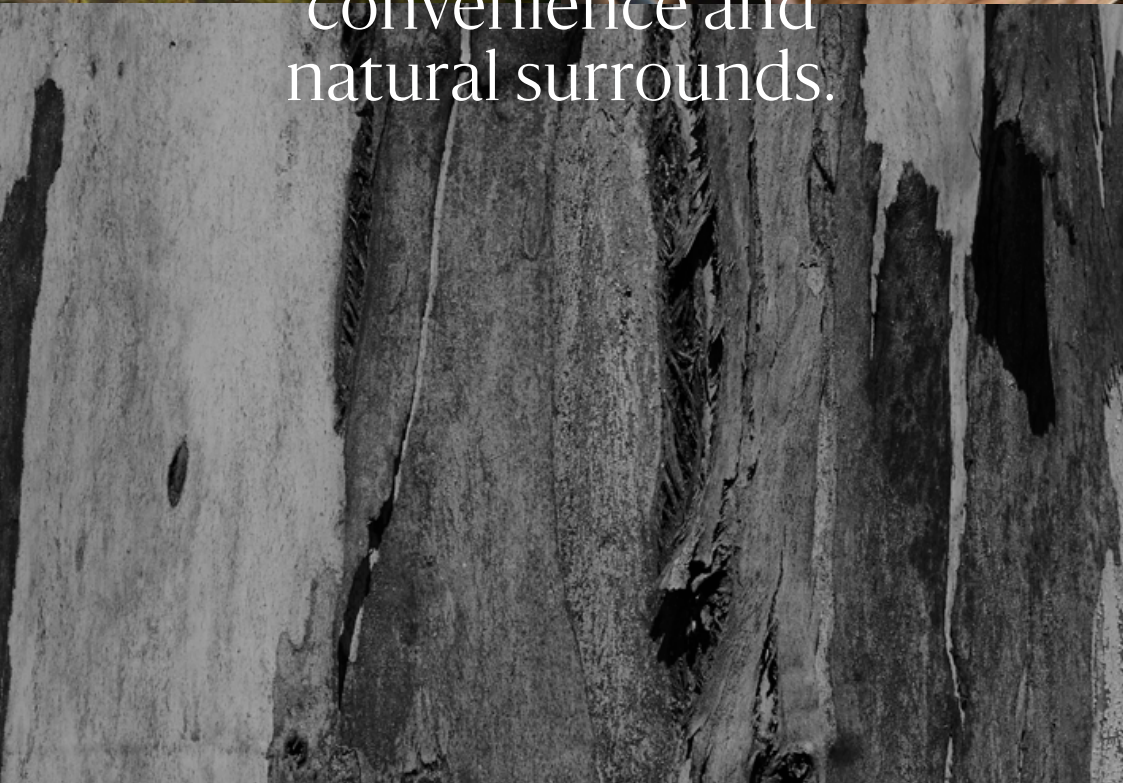
Eltham has the style and flavour of modern Melbourne with canopied natural landscapes to provide an enviable lifestyle balance. Abundant bushland filters the neighbourhood where leafy parks and riverbanks meet a thriving retail and café scene in a tightly held location, less than 20km from the bustle of the CBD.

Canopy encompasses the unique energy and charm that comes from urban design surrounded by nature. Set beside Eltham Town Centre and less than 500m from the Yarra River, a collection of just 35 residences over 4 levels introduce refined yet raw architectural design, saturated in greenery and sunlight. Materials borrowed from the environment bring rich texture to an uncluttered palette, resulting in spaces that are calm and confident; a true alchemy of modern design and nature.





The best of local  
convenience and  
natural surrounds.



## Location

Close to city life and naturally endowed with flourishing stretches of bushland, Eltham seals its reputation for offering something for everyone. Clean, green spaces and a friendly community are sustained by every modern convenience and a range of efficient train and bus networks that make public transport a refreshingly easy alternative.

The wider precinct offers an abundant choice of retailers and modern shopping experiences ranging from Westfield Doncaster's 430 stores and entertainment district, to nearby Greensborough Plaza with a cohesive offering of food, fashion and leisure. Immediate connection to a diverse selection of Melbourne's foremost private and public schools makes Eltham living as much about family life as it is about freedom.

## Residences



The best of well-considered architecture interwoven into the local leafy environment.

Architecture makes a conscious yet unassuming contribution to create a classic statement of modern living. The structure appears as a series of individual low-rise residences with gently pitched roof lines that make the upper levels appear to recede into the design.

Recessed and projected elements articulate a classic design featuring an understated material palette, borrowed from the environment to bring rich texture to a unique design. From the secure, underground parking to the topmost levels with curated views, design has been considered for the highest levels of liveability.

A black and white photograph of a stone wall with a wooden log in the foreground. The stone wall is made of large, rectangular blocks with visible mortar joints. The wooden log in the foreground shows a prominent grain and a knot. The image is used as a background for the text on the left side of the page.

## Project team

The best of team  
collaboration and  
field expertise.

Canopy is a unique collaboration, combining the expertise of an established, international property development group and the creativity of a renowned Australian architectural practice. In Eltham's unspoilt environment, Canopy is an opportunity to deliver a design that has an authentic connection to its natural environment while embracing the demands of modern living. MAP Architecture bring two decades of local knowledge and experience to an innovative yet respectful approach that defines Canopy. Spacious Property Development Group ground the project with a commitment to meeting the highest standards in quality and world class residential design.



Jarrod Farey | 0401 607 642

This document has been produced by the Vendor for advertising and general information only. The Vendor and its project team do not guarantee, warrant or represent that the information contained within this document is correct. Any interested party should undertake their own enquiries as to the accuracy of this information. The Vendor excludes unequivocally all inferred and implied terms, conditions and warranties arising out of this document and excludes all liability for loss or damage arising there from. Images shown are Artist Impressions and shown for illustrative purposes only. The plans are based on the current design for this development. Changes will undoubtedly be made during development, and dimensions, areas, fittings, finishes and specifications are subject to change without notice. The information contained herein is believed to be current, but is not guaranteed. Prospective purchasers must rely on their own enquiries. Furniture is not included. This document is for guidance and does not constitute an offer of contract.

© Savi Communications 2018